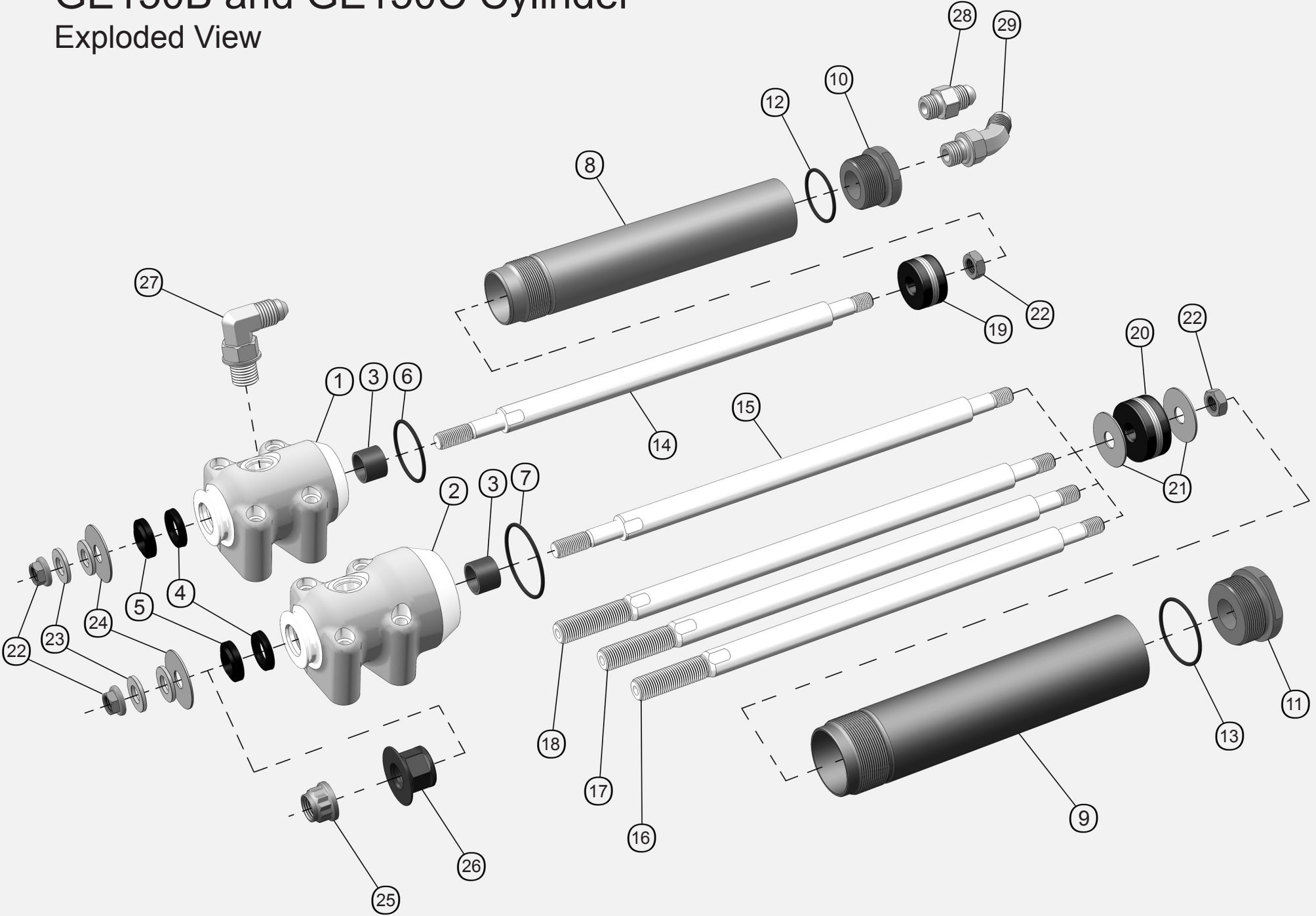


# GE150B and GE150C Cylinder

Exploded View



# GE150B and GE150C Cylinder Parts List (see also Installation Hardware)

## Applications of cylinders:

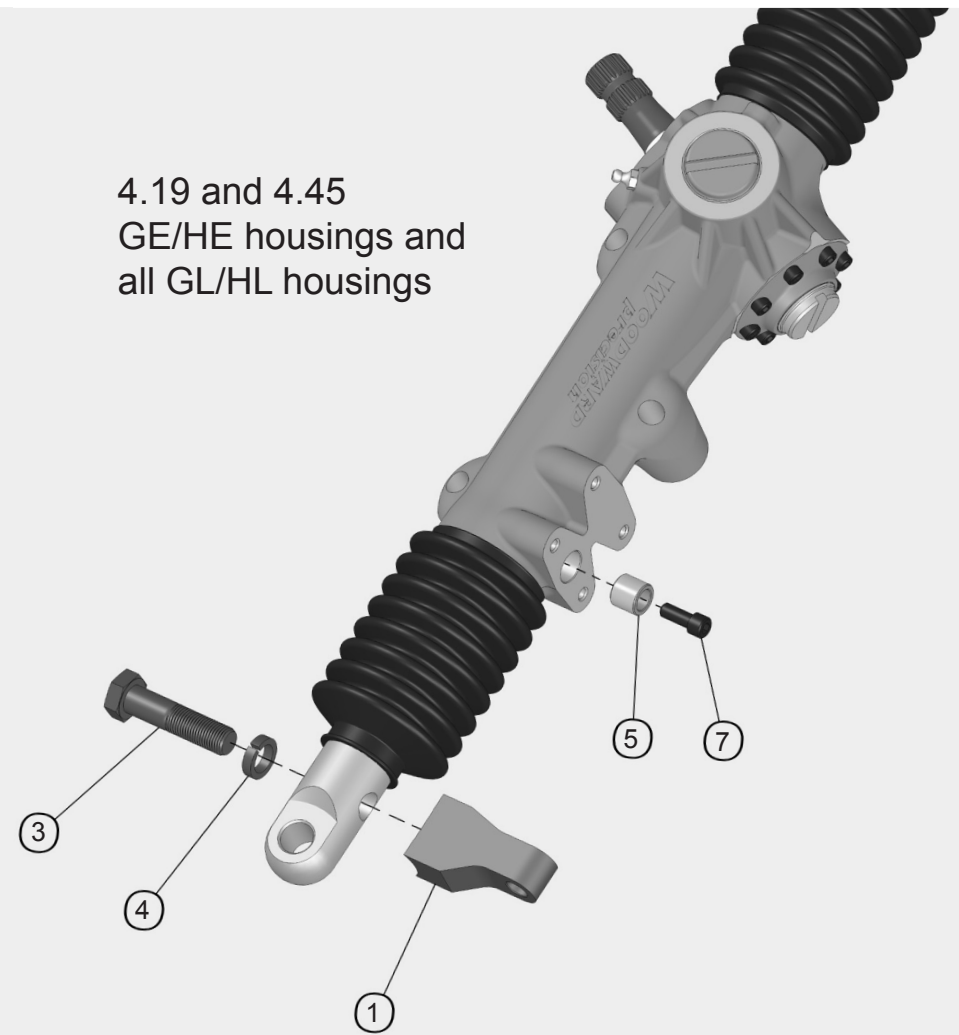
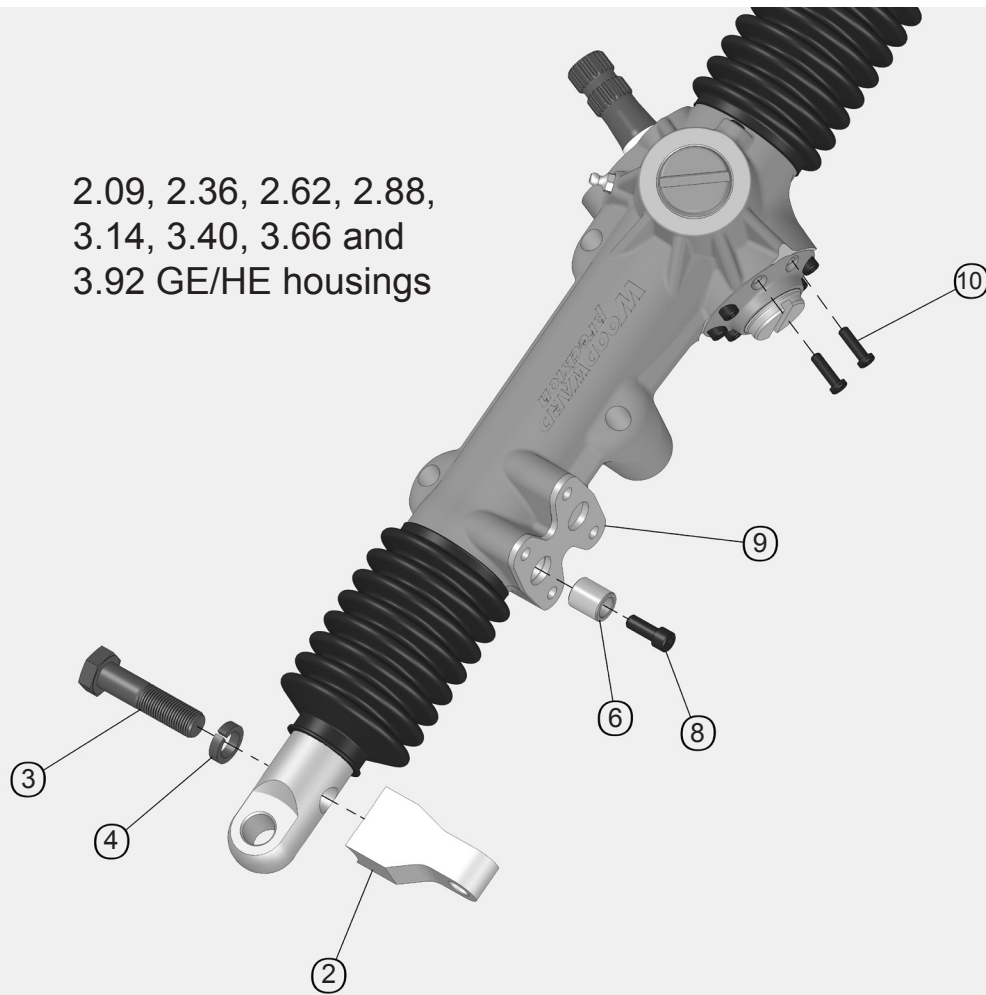
GE150B is backward-compatible to 1989 and is the replacement cylinder for older type G and H racks using the G264 rod bracket. It will also fit all current GE, HE, GL and HL models except for clevis racks.

GE150C is a larger-bore cylinder intended for higher loads. It will bolt directly to 4.19 and 4.45 GH/HE rack housings using the GE264 rod bracket. Mounting on all other GE/HE ratios requires the GE151S shim, the longer GE265 rod bracket, and a low head bolt for clearance. No shim is needed on GL and HL racks. *Please note, a C cylinder cannot be installed on old type G or H housings.*

GEC150C is made in three lengths to fit clevis racks. The lengths are non-interchangeable. The piston rods have a larger threaded diameter with a special nut that seats on a taper on the rod and shoulders against the rod bracket. Housings other than 4.19 and 4.45 use the GE151S shim.

Dwg no.	Part no.	Description	Dwg no.	Part no.	Description
1	GE151B	Head casting for 1.13 bore cylinder	16	GEC170C-1875	Piston rod for C cylinder used on clevis racks 18.75 long
2	GE151C	Head casting for 1.38 bore cylinder	17	GEC170C-1925	Piston rod for C cylinder used on clevis racks 19.25 long
3	GE152	Rod bushing 9/16 x 11/16OD x 1/2L	18	GEC170C-1975	Piston rod for C cylinder used on clevis racks 19.75 long
4	GE153	Loaded lip seal	19	GE171B	Piston/seal assembly for 1.13 bore
5	GE154	Rod wiper	20	GE171C	Piston/seal assembly for 1.38 bore
6	GE155B	Tube O-ring for 1.13 bore	21	GE172C	Backup washers for C piston
7	GE155C	Tube O-ring for 1.38 bore	22	GE173	3/8-24 lock nut
-	GE156	1/4-20 x 2 socket head cap screw (4)	23	GE174	3/8 SAE hardened flat washer (2)
8	GE160B	Cylinder tube, 1.13 bore	24	GE175	3/8 x 1-1/4 fender washer (boot retainer)
9	GE160C	Cylinder tube, 1.38 bore	25	GE176	1/2-20 12-pt. lock nut for GEC170 rods
10	GE161B	Cylinder plug, 1.13 bore	26	GE177	1/2-20 taper seat nut/boot retainer for GEC170 rods
11	GE161C	Cylinder plug, 1.38 bore	27	PS190	Hose adapter, steel, -6 male O-ring to -6 AN male flare, orientable 90 degree elbow
12	GE162B	Plug O-ring, 1.13 bore	28	PS180	Hose adapter, steel, -6 male O-ring to -6 AN male flare, straight
13	GE162C	Plug O-ring, 1.38 bore			
14	GE170B	Piston rod for B cylinder used on standard tie-rod and monoball racks	29	PS145	Hose adapter, steel, -6 male O-ring to -6 AN male flare, orientable 45 degree elbow
15	GE170C	Piston rod for C cylinder used on standard tie-rod and monoball racks			

# Installation Hardware used with GE150B and GE150C Cylinders



## Parts List

Dwg no.	Part no.	Description
1	GE264	Rod Bracket (includes cap screw and lock washer)
2	GE265	Rod Bracket (includes cap screw and lock washer)
3	-	1/2-20 x 2 Grade 8 hex cap screw
4	-	1/2 high-collar split-ring lock washer
5	GE107	Dowel, 9/16 x 1/2L (includes cap screw)

Dwg no.	Part no.	Description
6	GE108	Dowel, 9/16 x 5/8L (includes cap screw)
7	-	1/4-20 x 1/2 socket head cap screw
8	-	1/4-20 x 5/8 socket head cap screw
9	GE151S	Shim
10	-	#10-24 x 5/8 low head socket cap screw